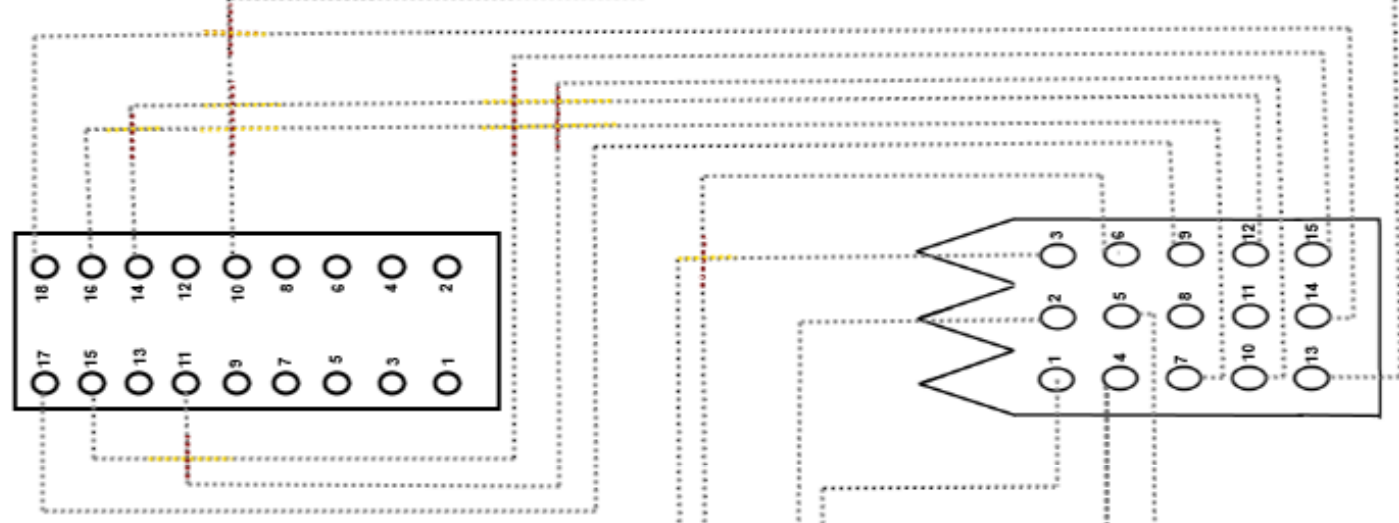


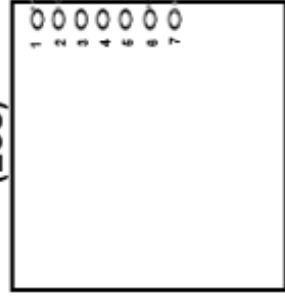
Head Cable Harness

Logic Board Plug 3 - 18Pin Plug

- Pins 1 - 9 N/C
- 10- Green / Yellow to HC pin 13
- 11- White / Grey to HC pin 10
- 12- N/C
- 13- N/C
- 14- White / Grey to HC pin 12
- 15- Black / Green to HC pin 15
- 16- Brown / White to HC pin 7
- 17- Brown White to HC pin 9
- 18- Black / Orange to HC pin 14



Electronic Control Unit (ECU)



Tape Length On/Off



- 1-White / Brown to ECU pin 7
- 2-White / Green to ECU pin 6
- 3-Black (coax) to ECU pin 1
- 4-White / Red Tape Len. on/off
- 5-White to Start Switch
- 6-Shield (coax) to ECU pin 2
- 7-Brown / White to L3 pin 16
- 8-N/C
- 9-Brown / White to L3 pin 17
- 10-White / Grey to L3 pin 11
- 11-N/C
- 12-White / Grey to L3 pin 14
- 13-Green / Yellow to L3 pin 10
- 14-Black / Orange to L3 pin 18
- 15-Black / Green to L3 Pin 15

Head Cable , 15Pin Plug